

How to find us

The Northern General Hospital

Herries Road, Sheffield S5 7AU

Tel: 0114 243 4343

www.sth.nhs.uk

Sheffield Teaching Hospitals NHS Foundation Trust runs five adult hospitals as well as services in the community:

- The Northern General Hospital
- The Royal Hallamshire Hospital
- Charles Clifford Dental Hospital
- Weston Park Hospital
- Jessop Wing Maternity Hospital

The **Northern General Hospital** is on the north side of the city about three miles from the city centre.

A separate map is available for the Royal Hallamshire Hospital, Weston Park Hospital, Jessop Wing Maternity Hospital and the Charles Clifford Dental Hospital. You can find the map on our website: www.sth.co.uk or call **0114 226 8989**.

Reaching us by car

From the M1 - Exit the motorway at J34 (Meadowhall) and follow signs for Sheffield City Centre (A6109). Continue on the A6109 past Meadowhall to the Brightside roundabout.

Take the third exit, signposted Hillsborough (A6102). Continue to follow the A6102, go straight across at the Fir Vale traffic lights then after about half a mile turn right into the hospital grounds (**Herries Road entrance**).

From the City Centre - Follow Barnsley Road (A6135) to Fir Vale.

To reach the **Barnsley Road entrance** go straight on at the Fir Vale traffic lights. The hospital entrance is the first turning on the left.

To reach the **Herries Road entrance** turn left at the Fir Vale traffic lights onto Herries Road. The entrance is about half a mile on the right.

From Barnsley (A6135) - The easiest access is to use the **Barnsley Road entrance**, but you can reach the **Herries Road entrance** by following Barnsley Road to the Fir Vale traffic lights and then turning right onto Herries Road. The entrance is about half a mile on the right.

Car parking around the hospital is limited and there is a small charge - remember to bring change with you.

Please use public transport if possible. Park & Ride sites linking with bus routes are available across the city.

Public Transport

Car parking around the hospital is limited so public transport is often the easiest way to get to us. The hospital is well served by public transport, with several bus stops within easy reach.

Up to date information about public transport links and Park & Ride sites is available from Travel South Yorkshire.

Travel Line tel: **01709 51 51 51**

www.travelsouthyorkshire.com

Help with your fares

If you are entitled to certain social security benefits you may be able to get help with your train or bus fares to the hospital. To do this you should contact your local Social Security office.

Further information and advice is also available from the hospital cashiers on **0114 271 4927**.

H1 A shuttle bus runs between the Northern General (Clock Tower building) and the Royal Hallamshire Hospital (Beech Hill Rd) every 30 minutes. There is a nominal fare.

C An electric Courtesy Minibus operates around the Northern General. The service is **free of charge** and links with the **H1** at the Clock Tower, allowing patients, visitors and staff easier access around the site.

The service is fully accessible to disabled travellers. Please ask the driver if you need help getting on the bus.



The Northern General Hospital

Sheffield Teaching Hospitals
NHS Foundation Trust



How to use this map

Please note that the hospital is situated over different levels. We have marked on the map the floor on which the main entrance to each building is located and corresponding link corridors.

Key to symbols

- 1** Entrance number
- B** Floor level
- P** Pay & display parking
- PL** Disabled parking
- B** Bicycle parking
- H1** Hospital shuttle bus
- C** NGH courtesy bus (stops on request)
- Bus stop** Bus stop

Further help is available at our reception points or entrances to help guide you to the department or ward you are looking for.

Numbered entrances

All the entrances to the hospital are numbered on your appointment letter, on this map and on the entrances themselves, to help you find your destination.

Further help is available at our main reception at the entrance of Huntsman Building (door 3 on the map).



1
Hadfield Wing
(includes wards)



2
Bev Stokes
Day Surgery Unit



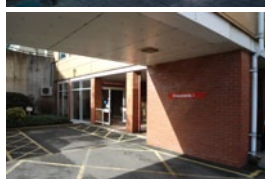
3
Huntsman Building
(includes OP 1 and
Huntsman wards)



4
Accident and
Emergency
Department



5
Fracture Clinic



6
Outpatients
Department 1



7
Brearley
Outpatients
Department



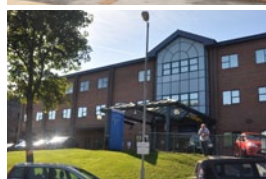
8
Cystic Fibrosis ward,
Diabetes Centre and
Research Centre



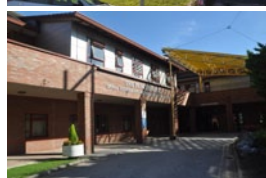
9
Medical
Education
Centre



10
Chesterman
Outpatients
Department



11
Chesterman
Building
(includes wards)



12
Spinal Injuries
Unit



15
Therapy Services
Outpatients
Department



16
Peter Moorhead
Dialysis Unit



17
Anaplastology Dept
Access from Vickers
Corridor



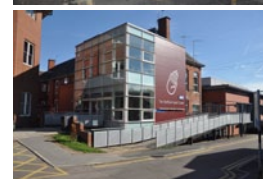
18
PET/CT Centre



19
Clinical Immunology
and Allergy Unit



20
Access to
Vickers Corridor
and wards



21
Hand Unit



22
Critical Care Unit
Intensive Therapy Unit
High Dependency Unit



23
Pain Clinic



24
Vickers Courtyard
Access to Vickers
Corridor and wards



25
Renal Outpatients



26
Metabolic Bone Unit



27
Palliative Care Unit



30
Children's Outpatients
Department



31
Outpatients
Department 2



32
Mobility and Specialised
Rehabilitation Centre



33
GP Collaborative